

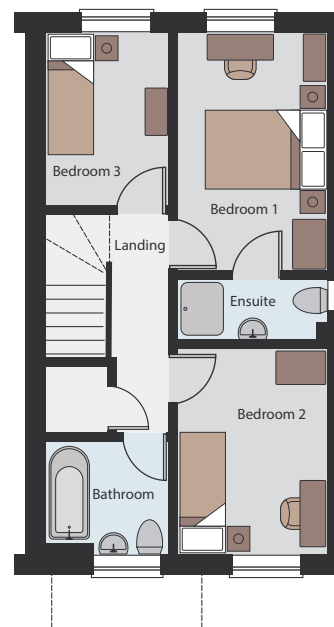
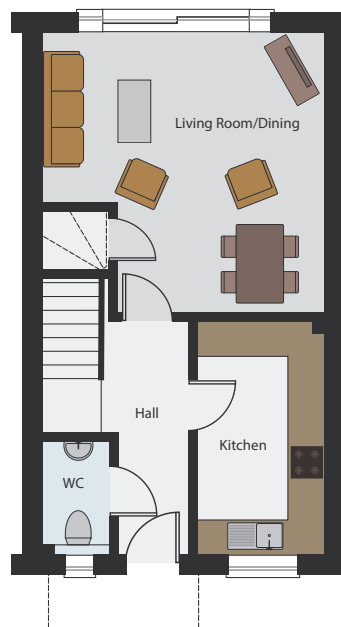


FIELD FARM

NEIGHBOURHOOD



THE SANDOWN
CONTEMPORARY



THE SANDOWN - A three bedroom attached property (Plots 27 and 28)

Ground Floor

Room	Metric (mm)	Imperial (ft-in)
Living/Dining	4623 x 4660	15'2" x 15'3"
Kitchen	2160 x 3919	7'1" x 12'10"

First Floor

Room	Metric (mm)	Imperial (ft-in)
Bedroom 1	3981 x 2520	13'1" x 8'3"
Bedroom 2	3525 x 2520	11'7" x 8'3"
Bedroom 3	2845 x 2010	9'4" x 6'7"

There is no ensuite window on plots 27, 29, 71, 73, 74, 82 and 84. Plots 27, 29, 72, 73, 82 and 85 are gable fronted.



Please Note: This insert and all the information detailed herein does not and will not constitute any part of any offer or contract, or be a representation including such contract. The insert and all photographs, illustrations, plans and sizes are indicative only to give a general indication of the proposed development and floor layouts. Images, specifications, treatments and plans are correct at the time of going to print, but may be subject to change during construction. None of the statements and information contained in this insert are to be relied on as statements or representation of fact and any intending purchaser must satisfy him/herself by inspection or otherwise as to the correctness of any statement. With regards to house type/floor plans, please note this information is subject to review and therefore potential change. All stated dimensions are subject to a tolerance of + or - 50mm (2"). You should be advised therefore, not to order any other goods which depend on accurate dimensions before carrying out a check measure within your reserved plot. Computer generated images are for illustrative purposes only. Homes may be 'handed' (mirror image) versions of illustrations and may be detached, semi-detached or terraced. Please ask the sales advisor on site for specific details. Westerman Homes reserve the right to alter plans, specification, elevation treatments, positions, and types of doors and windows without prior notice. Westerman Homes reserve the right to change house type mix and tenure of any home subject to market conditions and without notice.